

# Enhancing Wireless Communication Device Testing with Flexible and Reliable Test Equipment

## Tessolve's Strategic Partnership with Anritsu



### Introduction to Tessolve

Tessolve, a leading global semiconductor solutions company, specializes in end-to-end solutions encompassing chip design, testing, and PCB engineering. At the forefront of wireless technology, Tessolve provides comprehensive testing solutions for diverse wireless communication technologies, including 4G LTE, 5G NR, Private 5G, Wi-Fi, Bluetooth, NFC, and IoT.

Their commitment to innovation supports enterprise architecture and drives technological advancements, contributing to smarter societal functions.

### Testing Challenge

As Tessolve aimed to cater to various testing projects within the wireless industry through device validation service, a key challenge was enhancing the learning curve for engineers to adapt to test solutions while keeping overall project costs low. The quest for a reliable test equipment partner led Tessolve to Anritsu, a global provider of wireless and wired communication test equipment.

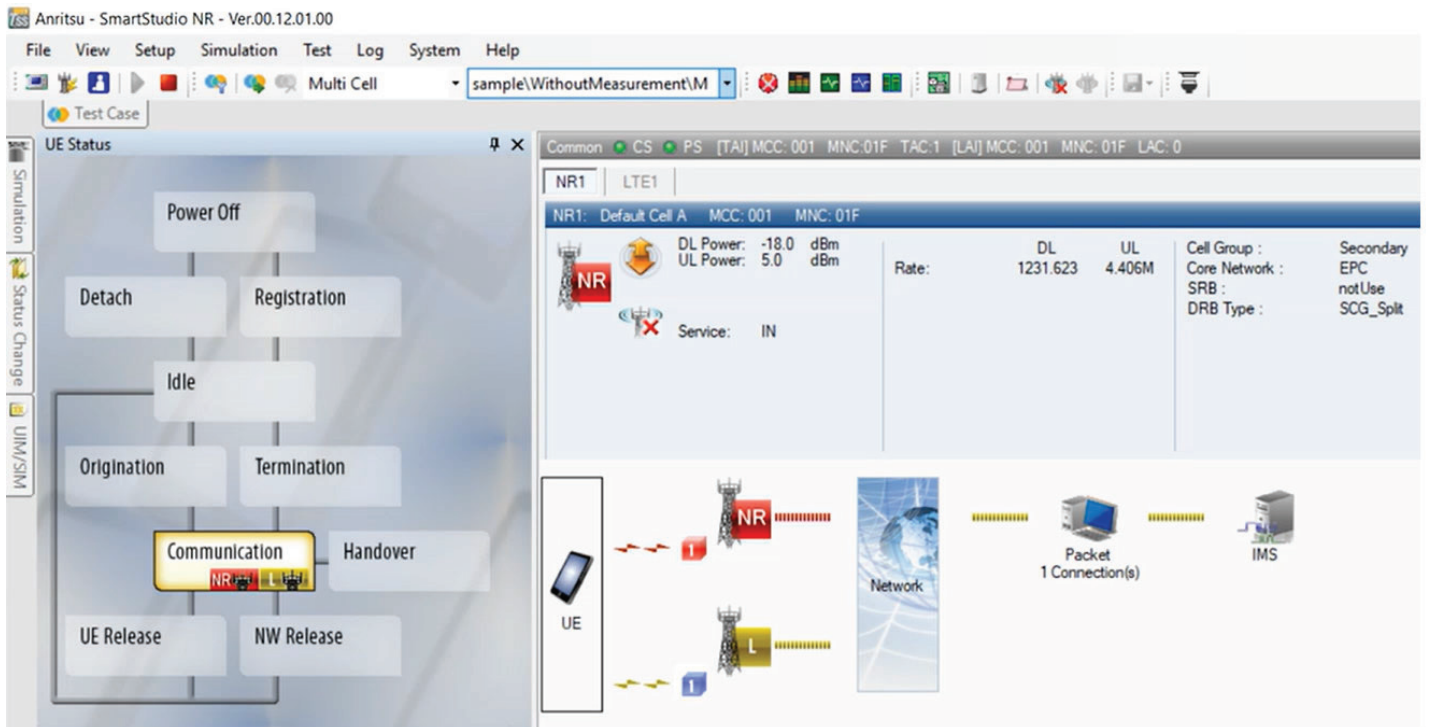
### Selecting Anritsu: A Strategic Decision

After careful analysis of their test requirements for network simulators, Tessolve selected Anritsu as the test solution provider for a broad range of wireless communication technology projects. Anritsu's state-machine-based GUI on Radio Communication Test Station MT8000A, Signalling Tester (Base Station Simulator) MD8475B proved instrumental in efficiently reducing training costs and time for engineers.

The decision was further solidified by Anritsu's reputation as a top-tier test equipment manufacturer, backed by product features,



**Fig 1:** Tessolve Semiconductor, Bangalore



**Fig 2:** State-machine-based GUI on MT8000A and MD8475B software

performance, quality, reliability, timely technical support, and compatibility with diverse testing requirements.

**Impactful Results from Anritsu’s Solutions:**

Anritsu’s test equipment, including MT8000A, and MD8475B, played a crucial role in completing test cases quicker and establishing a collaborative relationship characterized by smooth operations and consistent support to satisfy technical demands. Tessolve’s testing process seamlessly integrated these models, complementing existing testing protocols and enhancing overall capabilities, while supporting the test demand of LTE WLAN offload.

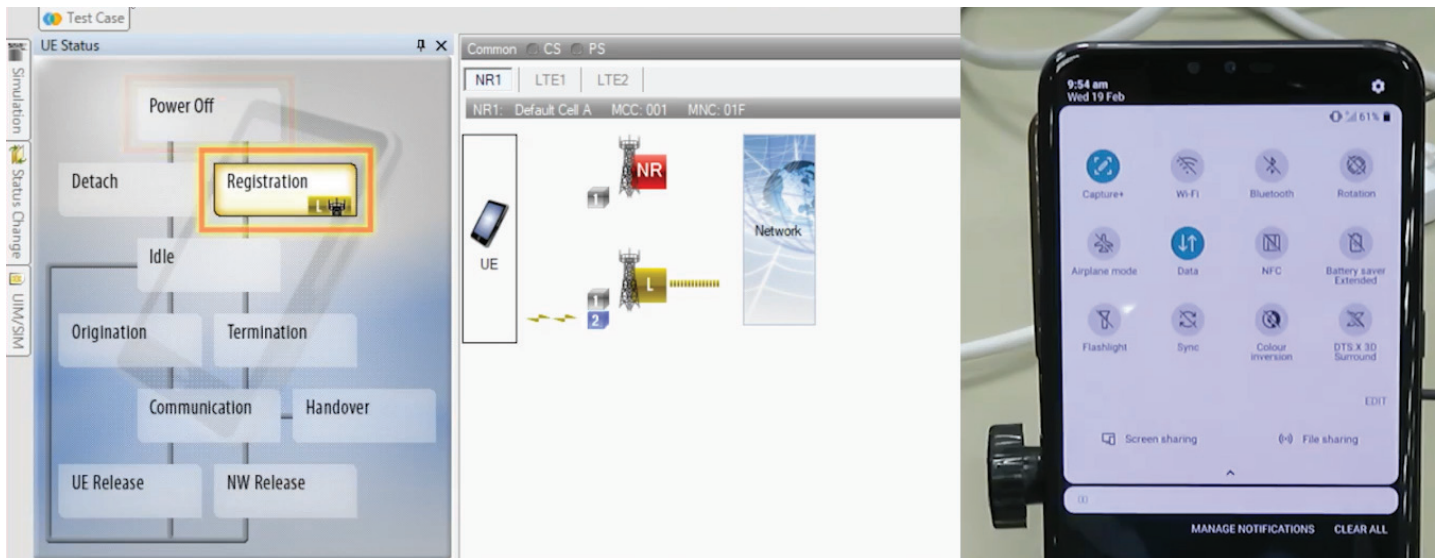
**Outcomes of using Anritsu’s Equipment:**

Tessolve’s quality control team commented, “We are very happy with these features, which allow our engineers to quickly find problems with the devices from the beginning. To be specific, the support for multi-cellular standards in a single box significantly reduced costs, maximizing our value for stakeholders.”

They are also impressed with the future upgradability of the test equipment to additional capabilities.



**Fig 3:** Anritsu Test Setup in Tessolve’s Lab



**Fig 4:** Easy-to-understand operation with graphical GUI

**Future Aspirations:**

The interactive and fruitful relationship between Tessolve and Anritsu sets the stage for continued collaboration. Tessolve is looking forward to support for new developments such as RedCap, NTN, and enhanced 5G testing capabilities as well as Open RAN to address evolving market needs and meet upcoming testing demands, ensuring their capabilities remain aligned with technological advancements.

**Featured Solutions:**

The Signalling Tester MD8475B is an all-in-one base station simulator supporting multi-cellular standards. The GUI-based software “SmartStudio” can offer an easy-to-test environment without creating test cases and understanding signalling protocols.



**Fig 5:** External view of MD8475B

**Interested in learning more?  
Visit [www.anritsu.com](http://www.anritsu.com)**